

ROTHERHAM BOROUGH COUNCIL – REPORT TO MEMBERS

1.	Meeting:	Cabinet
2.	Date:	23 May 2012
3.	Title:	Local Development Scheme
4.	Directorate:	Environment & Development Services

5. Summary

The report outlines an update to the Local Development Scheme to reflect the Localism Act 2011 and the new National Planning Policy Framework published in March 2012.

6. Recommendations

- 1. That Cabinet approve the revised and updated Local Development Scheme.**

7. Proposals and Details

It is a requirement of the Planning and Compulsory Purchase Act 2004 (as amended by the Planning Act 2008 and Localism Act 2011) that the local planning authority must prepare and maintain a local development scheme.

The Local Development Scheme (LDS) sets out an updated and revised project plan for the preparation of the Development Plan Documents (DPDs) that will comprise the Rotherham Local Plan. The LDS is intended to:

- set out the subject matter, geographic coverage, development plan status and inter-relationships of Local Plan documents and if any are to be prepared jointly with other local planning authorities
- establish and reflect priorities for the Local Plan to steer associated work programming and resource allocation
- give a timetable and set milestones for the preparation and review of documents

The LDS was last formally revised in March 2007. Further updates were on hold pending clarification of the requirements of the Localism Act and National Planning Policy Framework. Now that these two major pieces of legislation and guidance affecting local planning are in place it is timely to revise and update the LDS.

At future examinations of the Council's DPDs, one of the legal compliance checks that the planning inspector will carry out is that the DPD has been produced in conformity with the LDS. It is therefore important to ensure a revised and up to date LDS is in place in time for submission of the Core Strategy programmed for later in 2012.

The revised Local Development Scheme is attached at Appendix 1.

8. Finance

There are no direct financial implications arising from this report.

9. Risks and Uncertainties

Approval by Cabinet of the Local Development Scheme is sought to enable progress towards adoption of programmed DPDs.

- The Localism Act and National Planning Policy Framework (NPPF) express a strong presumption in favour of sustainable development. The NPPF allows a 12 month transition period after which our UDP policies will have diminished weight in decision making. It is important that Rotherham's Local Plan is in place as soon as possible to provide an up-to-date planning policy framework for the Borough's future growth and development.
- A failure to achieve timely progress on the Local Plan could delay the spatial strategy required to guide future decision-making on planning applications.

- Having a Local Plan in place will provide a steer for any neighbourhood plans that may emerge under the provisions of the Localism Act.
- Failure to make progress with the Local Plan risks delayed provision of the new homes and employment opportunities that the Borough needs.

10. Policy and Performance Agenda Implications

The implementation of the Local Plan will make a positive contribution to all of Rotherham's Regeneration priorities. When adopted, the Core Strategy and supporting documents will further the objectives of the Corporate Plan and support the delivery of the Rotherham Sustainable Community Strategy by:

- providing sufficient good quality homes
- ensuring well designed, decent affordable housing
- providing employment land to meet the needs of the modern economy and support sustainable communities through access to employment opportunities
- promoting the "town centre first" policy approach to help the regeneration and renaissance of Rotherham Town Centre

11. Background Papers and Consultation

Appendix 1: Local Development Scheme revised March 2012

Contact name:

Andy Duncan, Strategic Policy Team Leader
01709 823830, andy.duncan@rotherham.gov.uk

Appendix 1: Local Development Scheme revised March 2012

ROTHERHAM LOCAL PLAN

LOCAL DEVELOPMENT SCHEME

Updated March 2012

CONTENTS

- 1. Introduction**
 - Background
 - Purpose of the Local Development Scheme

- 2. Local Plan programme**
 - Timetable
 - DPD profiles

- 3. Monitoring and review**
 - Annual Monitoring Report

Maps

Map 1: Rotherham DPD geographic coverage

Map 2: Barnsley, Doncaster and Rotherham Joint Waste Core Strategy DPD geographic coverage

1. Introduction

Background

Rotherham's current development plan is the Unitary Development Plan (UDP), comprising a Written Statement, Proposals Map and Supplementary Planning Guidance. Until such time as the provisions of the Localism Act 2011 relating to revocation of Regional Strategies are enacted, the Yorkshire and Humber Plan (2008) also forms part of the development plan for Rotherham. The UDP was adopted in June 1999. The majority of the policies within the UDP were subsequently "saved" under the terms of the Planning and Compulsory Purchase Act 2004 by a direction from the Secretary of State (17/9/07).

The requirements for the Local Plan to replace the UDP are set out in the Planning and Compulsory Purchase Act 2004 (as amended by the Localism Act 2011) and the National Planning Policy Framework (NPPF). The Local Plan consists of a portfolio of Development Plan Documents (DPDs) together with documents concerned with the management of the plan making process.

Rotherham Local Plan documents produced to date include:

- the Local Development Scheme (and subsequent revisions)
- the Statement of Community Involvement
- Annual Monitoring Reports
- the Barnsley, Doncaster and Rotherham Joint Waste Core Strategy (DPD)

The Statement of Community Involvement was formally adopted by the Council on 14 June 2006. The Barnsley, Doncaster and Rotherham Joint Waste Core Strategy was adopted on 8 March 2012.

Purpose of the Local Development Scheme

This document sets out an updated and revised project plan for the preparation of the DPDs that will comprise the Rotherham Local Plan. The LDS is intended to:

- set out the subject matter, geographic coverage, development plan status and inter-relationships of Local Plan documents and if any are to be prepared jointly with other local planning authorities
- establish and reflect priorities for the Local Plan to steer associated work programming and resource allocation
- give a timetable and set milestones for the preparation and review of documents

2. Local Plan programme

Timetable

The Rotherham Local Plan programme is focused on the following development plan documents (DPDs):

- Core Strategy DPD
- Sites & Policies DPD and Proposals Map
- Barnsley, Doncaster & Rotherham Joint Waste Core Strategy DPD

The programme is illustrated in the timetable overleaf and expanded in the subsequent detailed profiles for each DPD included within this section.

An up-to-date timetable will always be available on the Council's website under the Local Development Scheme page accessible via:

<http://www.rotherham.gov.uk/forwardplanning>

Rotherham Local Plan Timetable - Revised Mar 2012

	2012												2013												2014											
	J	F	M	A	M	J	J	A	S	O	N	D	J	F	M	A	M	J	J	A	S	O	N	D	J	F	M	A	M	J	J	A	S	O	N	D
Core Strategy DPD																																				
Sites and Policies DPD & Proposals Map																																				
Joint Barnsley, Doncaster & Rotherham Waste Core Strategy DPD																																				

Production & Consultation

P Preparation starts by consulting statutory bodies on the scope of Sustainability Appraisal
C Consultation on options/continuous engagement

Publication

PSV Publication of proposed submission version

Examination

S Submission to Secretary of State, examination period starts
M Pre-examination meeting (if required)
E Examination hearings
R Inspector's report

Adoption

A Adoption

DPD profiles

Core Strategy DPD	
Document details	
Role and content	Sets out the vision, objectives and strategic policies for the future spatial development of the Borough, including targets for new housing and employment land
Status	DPD
Chain of conformity	To conform with national planning policy and the Regional Spatial Strategy (pending revocation)
Geographic coverage	Rotherham Metropolitan Borough
Timetable and milestones	
Commencement and pre-production	June 2005 – Feb 2006
Consultation with statutory bodies on the scope of the Sustainability Appraisal	Feb – June 2006
Public consultation on Issues and Options	May – June 2006
Public consultation on Preferred Options and Sustainability Appraisal	Feb – Mar 2007
Public consultation on Revised Options and Sustainability Appraisal	May – Aug 2009
Public consultation on Draft Core Strategy and Sustainability Appraisal	July – Sept 2011
Publication of Core Strategy for "soundness" representations and Sustainability Appraisal	July – Aug 2012
Submission of Core Strategy and Sustainability Appraisal	Nov 2012
Examination in Public	Mar 2013
Receipt of Inspector's report	July 2013
Adoption of the DPD	Aug 2013
Arrangements for production	
Lead responsibility	Forward Planning Team, Rotherham MBC
Management arrangements	Production stages guided by Member Steering Group recommending endorsement by Cabinet and approval by Full Council
Resources required	Produced internally with consultant input in relation to certain evidence base studies
Approach to involving the community and stakeholders	Outlined in the SCI with emphasis on front loading and fully reflecting the aims and programmes of community strategy and other principal stakeholders
Post production	
Monitoring and review mechanisms	Via the Annual Monitoring Report

Sites & Policies DPD and Proposals Map

Document details	
Role and content	Identifies sites proposed for development to deliver the Core Strategy together with policies for the managed release of land
Status	DPD
Chain of conformity	To conform with national planning policy, the Regional Spatial Strategy (pending revocation) and the Core Strategy
Geographic coverage	Rotherham Metropolitan Borough
Timetable and milestones	
Commencement and pre-production	Jan 2007
Call for Sites	Jan 2007 – Nov 2008
Release of Sites as part of the evidence base to support public consultation on Core Strategy Revised Options and Sustainability Appraisal	May – Aug 2009
Public consultation on Issues and Options	July – Sept 2011
Consultation with statutory bodies on the scope of the Sustainability Appraisal	June – Sept 2012
Public consultation on Draft Sites & Policies DPD and Proposals Map and Sustainability Appraisal	Oct – Dec 2012
Publication of Sites & Policies DPD and Proposals Map for "soundness" representations and Sustainability Appraisal	June – July 2013
Submission of Sites & Policies DPD and Proposals Map and Sustainability Appraisal	Oct 2013
Examination in Public	Feb 2014
Receipt of Inspector's report	May 2014
Adoption of the DPD	June 2014
Arrangements for production	
Lead responsibility	Forward Planning Team, Rotherham MBC
Management arrangements	Production stages guided by Member Steering Group recommending endorsement by Cabinet and approval by Full Council
Resources required	Produced internally with consultant input in relation to certain evidence base studies
Approach to involving the community and stakeholders	Outlined in the SCI with emphasis on front loading and fully reflecting the aims and programmes of community strategy and other principal stakeholders
Post production	
Monitoring and review mechanisms	Via the Annual Monitoring Report

Barnsley, Doncaster & Rotherham Joint Waste Core Strategy DPD

Document details	
Role and content	Allocates strategic waste management sites within the three local authorities to deliver the Core Strategy together with supporting policies
Status	DPD
Chain of conformity	To conform with national planning policy, the Regional Spatial Strategy (pending revocation) and the Core Strategy
Geographic coverage	The Metropolitan Boroughs of Barnsley, Doncaster and Rotherham
Timetable and milestones	
Commencement and pre-production	Aug 2007
Consultation with statutory bodies on the scope of the Sustainability Appraisal	Feb – Mar 2008
Public consultation on "Towards Publication" document and Sustainability Appraisal	Nov 2008 – Jan 2009
Public consultation on potential sites	Jan – Nov 2009
Public consultation on Draft Joint Waste Core Strategy DPD and Sustainability Appraisal	June – Aug 2010
Publication of Joint Waste Core Strategy DPD for "soundness" representations and Sustainability Appraisal	Apr – May 2011
Submission of Joint Waste Core Strategy DPD and Sustainability Appraisal	July 2011
Examination in Public	Oct – Nov 2011
Receipt of Inspector's report	Jan 2012
Adoption of the DPD	Mar 2012
Arrangements for production	
Lead responsibility	Joint Barnsley, Doncaster and Rotherham Councils
Management arrangements	Approved by Joint Chief Executives and Council Leaders under delegated powers
Resources required	Combination of dedicated consultants managed by Steering Group with representation from the constituent authorities and in-house planning officers
Approach to involving the community and stakeholders	Co-ordinated approach to consultation drawing on a common specification from the adopted SCIs of the three local authorities
Post production	
Monitoring and review mechanisms	Via the Annual Monitoring Reports of the three local authorities

3. Monitoring and review

Annual Monitoring Report

Continuous monitoring and review are essential to the plan, monitor and manage process in the successful delivery of the spatial vision and objectives of the Local Plan. The Annual Monitoring Report (AMR) has an important dual role in tracking progress in the preparation of DPDs as well as monitoring outputs and trends, contributing to a broader evidence base against which policies and their implementation can be evaluated.

The AMR will be published at the end of each calendar year, reporting progress made in the preceding financial year. The AMR will:

- specify how the Council is performing within the timescales for DPD preparation set out in the LDS
- inform the rolling forward of the Local Plan programme in the LDS
- provide an update of the extent of the remaining parts of the UDP.

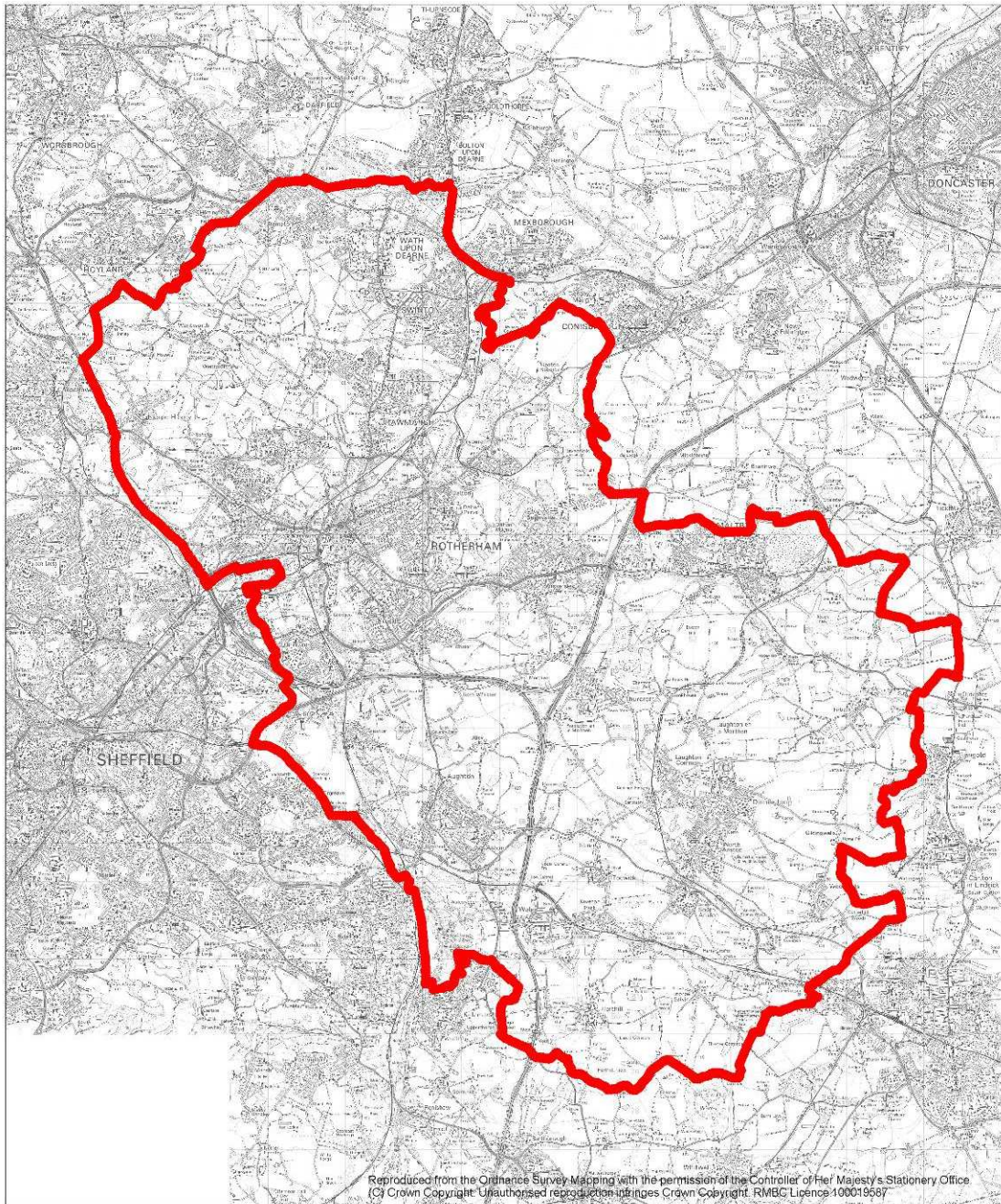
As well as assessing the Council's progress in implementing the Local Development Scheme the AMR will also:

- provide details of how well policies are being achieved by tracking the impact of policies on relevant targets and whether policies need adjustment in the light of changes to national policy. In particular, the AMR will include trajectories of forecast future housing supply against strategic housing requirements.
- Provide an updated list of technical studies, reports and other relevant publications contributing to the evidence base supporting Local Plan preparation.
- Indicate the performance of infrastructure providers against the infrastructure delivery planning requirements set out in the Core Strategy.

Annual Monitoring Reports will always be available on the Council's website under the Annual Monitoring Report page accessible via:

<http://www.rotherham.gov.uk/forwardplanning>

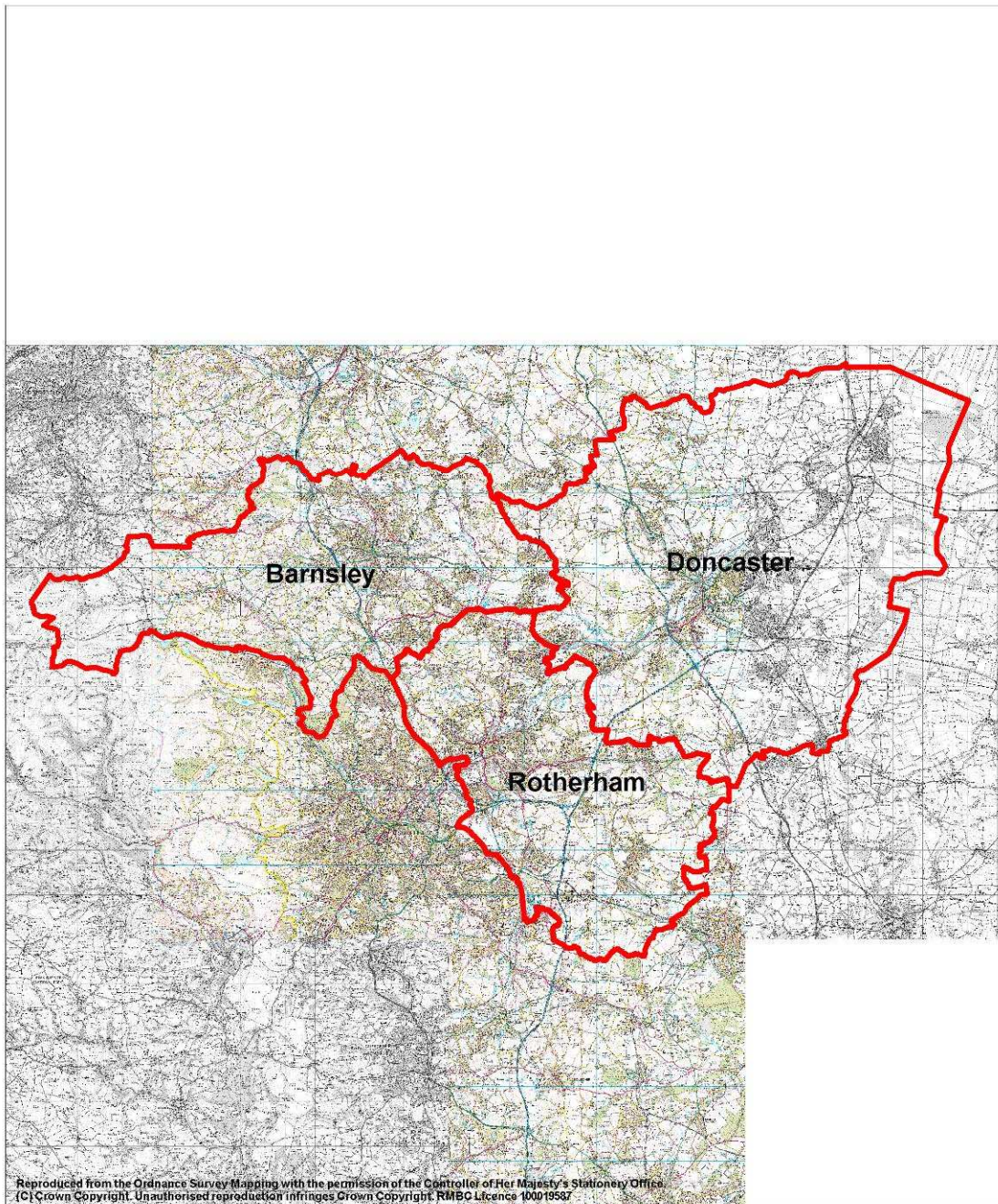
Map 1: Rotherham DPD geographic coverage




Core Strategy DPD
Sites & Policies DPD
Proposals Map

— Rotherham Borough Boundary

Map 2: Barnsley, Doncaster and Rotherham Joint Waste Core Strategy DPD geographic coverage



Barnsley, Doncaster & Rotherham
Joint Waste Core Strategy DPD

 Borough Boundaries